

Orientation Tour of Internship Rotation Sites

September 10, 2009

To San Francisco General Hospital (Psychiatric Emergency Services Rotation):

From South Bay/Peninsula

Take 101 Northbound
Take the Army St/Potrero Ave. exit
Merge onto Potrero Avenue
(park on the street next to the hospital)

From Bay Bridge:

Take 80 to 101 Southbound
Take Cesar Chavez exit
Merge onto Potrero Avenue
(park on the street next to the hospital)

SFGH is at 1001 Potrero Avenue (cross street is 23rd) .

PES is on the first floor of the main building.

Contact person is Bob Buckley, MD

Telephone: 415.206.8125.

From SFGH to PAES

(Dual Diagnosis and Pre-employment Services Rotation): 1.6 mile

Go North on Potrero towards 22nd St.
Potrero Ave becomes Brannan St.
Left onto 9th St, right on Mission St

PAES is located at 1235 Mission Street (between 8th and 9th St.)

Contact person is Jessica Katzman, Psy.D.

Telephone: (415) 558-1347

From PAES to Broderick House

(Adult Residential Services Rotation): 2.1 miles

Head southwest on Mission St toward Laskie St.
Turn right at 9th St, continue on Hayes St
Turn right at Van Ness Ave., then left at Geary Blvd
Turn right at Broderick St (park right after the turn)

Broderick House is at 1421 Broderick Street (cross street is Geary)

Contact person is Michael Badolato, LMFT.

Telephone: 415.292.1892

From BH to Abraham Lincoln High School

(School Wellness Center Rotation): 4.7 miles

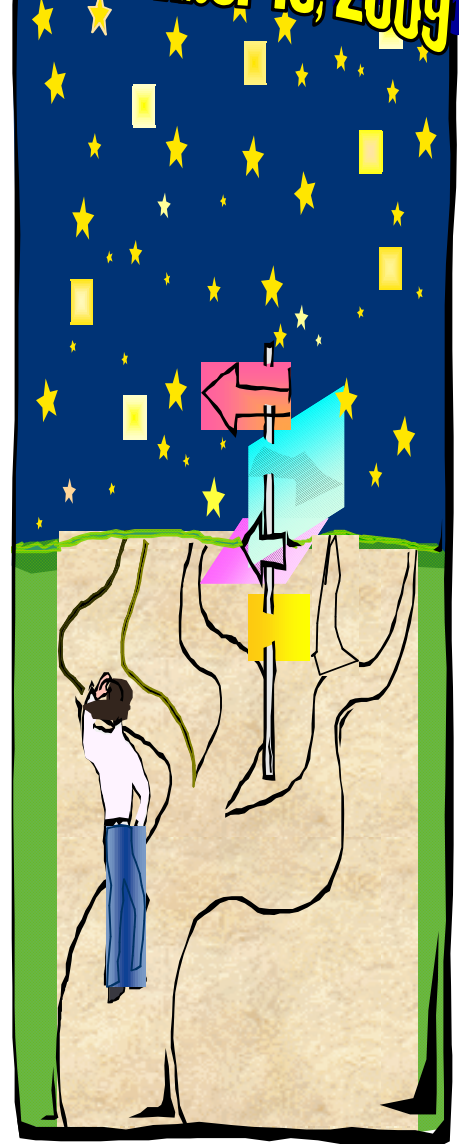
Turn right on Geary Blvd., left on 12TH Ave. for 0.1 miles,
Right onto Anza St. for 0.1 miles
Left onto Park Presidio Blvd. for 0.9 miles;
Continue onto Crossover Dr. for 0.4 miles;
Continue onto 19th Ave. for 1.2 miles
Right onto Quintara St. , go 0.3 miles
Left onto 24th Ave. for 0.1 miles

ALHS is at 2162 24th Avenue (cross street is Quintara)

Wellness Center is located in Rm. 143.

Contact person is Sheening Lin, M.S.

His voice mail: 415.668.5960, x. 569



**If you need help with directions
during the rotation tour,
call Alla Volovich at 415.831.4395**